

ASSEMBLY INSTRUCTIONS

ITEM DESCRIPTION:

ITEM NO.: 45629 NAME: Indiana Pendant

MATERIAL TYPE: Wicker FINISH: Natural

SOCKET TYPE: E26 SOCKET QTY: 1

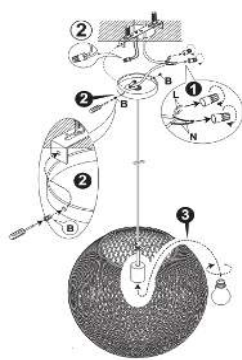
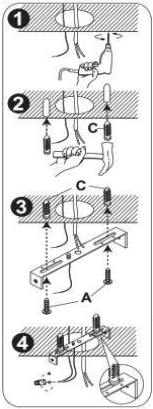
BULB WATTAGE: 60W/16W CFL/13W LED

VOLTAGE: 110-120 V ITEM NET WEIGHT: 8LBS

Figure 1

Figure 2

Figure 3



PARTS INCLUDED:

Main Body Qty: 1

Mounting Plate Qty: 1

Canopy Qty: 1

HARDWARE INCLUDED:

Mounting Screws 2 Pcs Mounting Anchors 2 Pcs

Plastic Wire Connector 2 Pcs

Canopy Screw 2 Pcs

TO INSTALL YOU WILL NEED:

- 2 people recommended
- Phillips Screwdriver

These instructions are provided for safety. It is very important that they are read carefully and completely before beginning installation.

We strongly suggest that all hard-wired fixtures must be installed by a professional electrician.



TO ASSEMBLE:

1. **SHUT OFF THE MAIN ELECTRICAL SUPPLY FROM THE MAIN FUSE BOX/CIRCUIT BREAKER.**
2. Please check you have all parts before beginning assembly.
3. Secure the cross-bar to the Junction Box with the Mounting Screws and Anchors (A & C). Tighten until snug. (Figure 1, Steps 1-3)
4. Establish electrical connections: a) Connect the NEUTRAL FIXTURE WIRE (has ridges molded on the outside insulation) to the NEUTRAL JUNCTION BOX WIRE (usually white insulation). Fasten each together with a wire connector and wrap the connection with electrical tape. Be sure that no wire strands are exposed. b) Connect the HOT FIXTURE WIRE (has insulation that is smooth) to the HOT JUNCTION BOX WIRE (usually black insulation). Fasten each together with a wire connector and wrap the connection with electrical tape. Be sure that no wire strands are exposed. **DO NOT REVERSE THE HOT AND NEUTRAL CONNECTIONS OR SAFETY WILL BE COMPROMISED.** c) If the J-Box includes a ground wire, attach the GROUND WIRE of the fixture to the GROUND J-BOX WIRE. Fasten the wires together with a plastic wire connector and wrap the connection with electrical tape. Be sure that no wire strands are exposed. If there is no ground wire in the J-Box, use a screwdriver to secure the end of the chandelier ground wire to the GREEN screw located on the cross-bar. Wrap the wire around the screw once clockwise and then tighten the screw. Make sure that the wire is held firmly by the screw and did not slip out during tightening. (Figure 1, Step 4 | Figure 2)
5. After all connections are made attach the canopy to the crossbar. Align the holes of the side portions of the crossbar with the holes located in the side of the canopy. Using a screwdriver Insert the canopy screws (B) through each hole of the canopy and into threaded engagement with the cross bar. Do not over-tighten the screws. (Figure 3)
6. Insert (1) 60-watt maximum TYPE A standard incandescent light bulbs (not included) into the sockets. **DO NOT EXCEED THE RECOMMENDED WATTAGE.**
7. Restore power to ceiling outlet junction box and test fixture.

CARE INSTRUCTIONS:

Wipe with a soft, dry cloth. To protect finish, avoid the use of chemicals and household cleaners.

For customer service questions call 1-800-338-2150

ARTERIOS