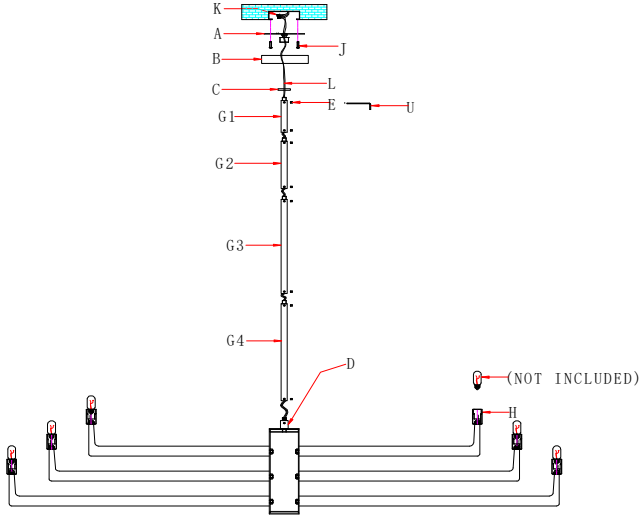


# ASSEMBLY INSTRUCTIONS

## ITEM DESCRIPTION:

ITEM NO.: DLC43	NAME: GRIFF LARGE CHANDELIER
MATERIAL TYPE: IRON	FINISH: CHATTERED ANTIQUE BRASS
SOCKET TYPE: E12	SOCKET QTY: 12
BULB WATTAGE: TYPE T 60W	
VOLTAGE: 100V-120V	ITEM NET WEIGHT:20LBS



## PARTS INCLUDED:

Mounting Plate(A)	Qty:1PC	Socket(H)	Qty:12PCS
Canopy(B)	Qty:1PC	Electric Wire(L)	Qty:1PC
Collar (C)	Qty:1PC		
Lamp Body (D)	Qty:1PC		
Hex Screw (E)	Qty:8PCS		
Rod (G1,G2,G3,G4)	Qty:4PCS		

## HARDWARE INCLUDED:

Mounting Screw(J)	Qty:2PCS	Allen Wrench(U)	Qty:1PC
Plastic Wire Connector(K)	Qty:3PCS		
Green Ground Screw	Qty:1PC		

## TO INSTALL YOU WILL NEED:

- 2 people recommended
- Phillips Screwdriver
- Allen Wrench

These instructions are provided for safety. It is very important that they are read carefully and completely before beginning installation.

We strongly suggest that all hard-wired fixtures must be installed by a professional electrician.

## TO ASSEMBLE:

1. Shut off the main electrical supply from the main fuse box/ circuit breaker.
  2. Carefully unpack all fixture parts and hardware and lay them on a soft surface for assembly.
  3. Gently pull wiring down from ceiling junction box and allow to hang.
  4. Remove mounting plate(A) from the canopy(B) by unscrewing the collar (C).
  5. Pass the power wire (L) through the rods (G4), (G3), (G2), and (G1). Screw the rod (G4) to the lamp body (D) until tight. Repeat the same operation with rods (G3), (G2), and (G1). When you connect the rods, loosen the small hex screws (E) in the side hole first, then tighten them with an Allen wrench (U) after all rods are connected. Ensure that all the hexagonal screws are tightened securely.
  6. Put the collar loop (C) and canopy (B) onto the rod (G1) in sequence, then thread the power wire (L) through the mounting plate (A). Secure the rod (G1) to the nipple of the mounting plate (A) until it is tight.
  7. Pull the electrical cord of "J box" through the exit hole of the mounting plate(A).
  8. Carefully inspect the chandelier's fixture wires.  
Neutral fixture wire: It has very fine ridges molded into its plastic covering.  
Hot fixture wire: It has a smooth covering  
Ground wire: Bare wire
  9. Wrap ground wire of lamp assembly and ground wire of junction box together and fasten together with a wire nut and wrap the connection with electrical tape.
  10. Attach the neutral fixture wire from the chandelier to the neutral junction box wire. Fasten each together with a wire nut and wrap the connection with electrical tape.
  11. Attach the hot fixture wire from the chandelier to the hot junction box wire. Fasten each together with a wire nut and wrap the connection with electrical tape.
- DO NOT REVERSE THE HOT AND NEUTRAL CONNECTIONS OR SAFETY WILL BE COMPROMISED.**
12. Gently tuck the wire connections(K) neatly into the ceiling junction box.
  13. Place the mounting plate(A) over the center of the ceiling junction box.
  14. Align holes in mounting plate(A) with holes in junction box and attach with two mounting screws(J). Secure screws with a Phillips head screwdriver.
  15. Push canopy(B) up over the mounting plate(A) until it is flush with the ceiling.
  16. Push collar (C) through hole in canopy(B) and thread onto nipple on the mounting plate(A). Secure by turning collar(C) clockwise until canopy(B) is flush with the ceiling.

## CARE INSTRUCTIONS:

Wipe with a soft, dry cloth. To protect finish, avoid the use of chemicals and household cleaners.

For customer service questions call 1-800-338-2150

ARTERIOS