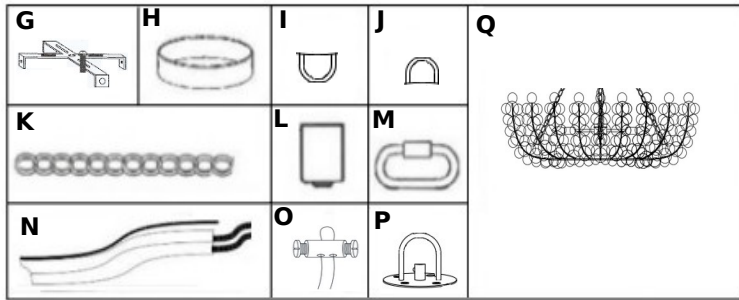


ASSEMBLY INSTRUCTIONS

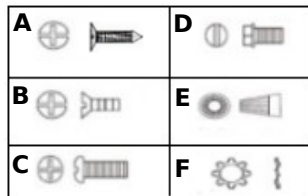
ITEM DESCRIPTION:

ITEM NO.: DLS20 NAME: Bilal Chandelier
 MATERIAL TYPE: Coco FINISH: Ivory
 SOCKET TYPE: Type B - Candelabra SOCKET QTY: 6 pcs.
 BULB WATTAGE: 40 Watts VOLTAGE: 120V
 ITEM NET WEIGHT: 54.2 LBS.



PARTS INCLUDED:

G) MOUNTING PLATE	QTY: 1x	L) SOCKETS	QTY: 6x
H) CANOPY	QTY: 1x	M) QUICK LINKS	QTY: 10x
I) CANOPY LOOP	QTY: 1x	N) FIXTURE WIRE	QTY: 1x
J) PENDANT LOOP	QTY: 4x	O) SAFETY CABLE ASSEMBLY	QTY: 1x
K) CHAIN: CENTER CONNECTING	QTY: 1x QTY: 4x	P) WASHER W/ LOOP	QTY: 1x
		Q) SHADE	QTY: 1x



HARDWARE INCLUDED:

A) MOUNTING SCREWS	4x	D) GREEN GROUND SCREW	1x
B) OUTLET BOX SCREWS	2x	E) PLASTIC WIRE CONNECTORS	3x
C) CANOPY SCREWS	4x	F) STAR WASHERS	4x

TO INSTALL YOU WILL NEED

- Phillips Screwdriver
- 2 people recommended
- Plier
- Drill
- Ladder
- Wire Cutter / Stripper
- Electrical Tape
- Pencil

These instructions are provided for safety. It is very important that they are read carefully and completely before beginning installation.

This product must be installed in accordance with the applicable installation codes by a person familiar with the construction and operation of the product and the hazards involved.

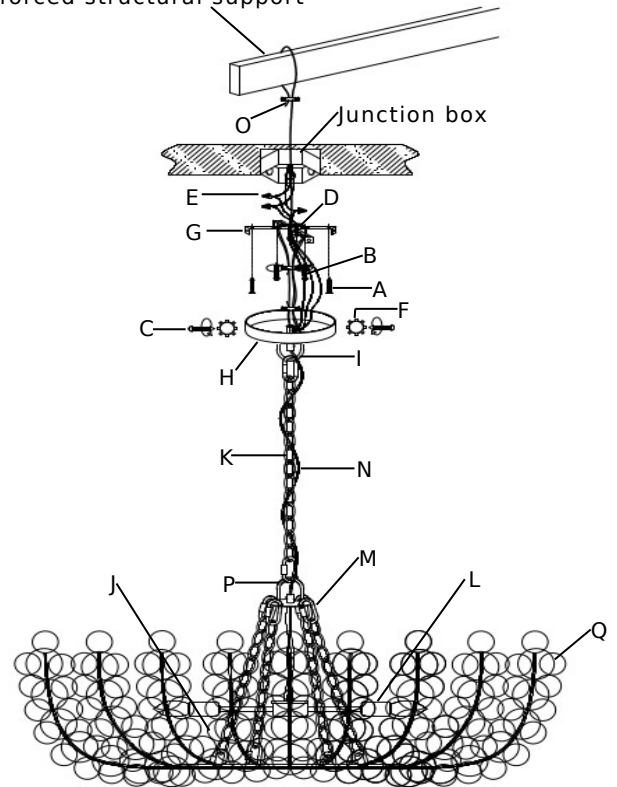
The weight of this lighting fixture exceeds 50 pounds. Fixtures weighing 50 lbs or more will require additional reinforcement above the ceiling where they are to be installed.

THIS LUMINAIRE MUST BE MOUNTED OR SUPPORTED INDEPENDENTLY OF AN OUTLET BOX.

The lighting fixture is meant for indoor use. DRY LOCATIONS ONLY

We strongly suggest that all hard-wired fixtures must be installed by a professional electrician.

Reinforced structural support



TO ASSEMBLE:

1. Shut off the main electrical supply from the main fuse box / circuit breaker.
2. Carefully unpack all fixture parts and hardware and lay them on a soft surface for assembly.
3. Gently pull wiring down from ceiling junction box and allow to hang.
4. Remove mounting plate from the canopy by unscrewing the canopy screws.
NOTE: The weight of this lighting fixture exceeds 50 pounds. THIS LUMINAIRE MUST BE MOUNTED OR SUPPORTED INDEPENDENTLY OF AN OUTLET BOX.
5. Using the mounting plate hole as a template, mark and drill fixing holes in the ceiling. Attach the mounting plate into a structural ceiling member using mounting screws.
6. Secure the mounting plate to the Junction Box with the outlet box screws. Tighten until snug.
7. Guide safety cable exiting canopy through the opening in mounting plate and into ceiling junction box. From above the ceiling junction box, loop safety cable around an appropriate load bearing structure. Use cable lock nut to secure position of cable. Insert screws into both holes on cable lock nut and tighten it using screwdriver.
8. Carefully inspect the pendant's fixture wires.
Neutral fixture wire: has ridges molded on the outside insulation
Hot fixture wire: has insulation that is smooth
Ground wire: bare copper wire
9. Wrap ground wire of lamp assembly around the green ground screw on the mounting plate, and tighten screw to secure the wire. Then connect this fixture's ground wire to the ground wire of junction box (usually green insulation or bare wire) with a plastic wire connector and wrap the connection with electrical tape.
10. Attach the neutral fixture wire from the pendant to the neutral junction box wire (usually white). Fasten each together with a plastic wire connector and wrap the connection with electrical tape.

11. Attach the hot fixture wire from the pendant to the hot junction box wire (usually black). Fasten each together with a plastic wire connector and wrap the connection with electrical tape. **DO NOT REVERSE THE HOT AND NEUTRAL CONNECTIONS OR SAFETY WILL BE COMPROMISED.**
12. Gently tuck the wire connections neatly into the ceiling junction box.
13. Attach the canopy to the mounting plate. Align the holes of the side portions of the mounting plate with the holes located in the side of the canopy. Using a screwdriver insert the canopy screws and star washers through each hole of the canopy and into threaded engagement with the mounting plate. Do not over-tighten the screws.
14. Restore power to junction box and test fixture. Insert six (6) 40-watt maximum Type B candelabra bulbs (not included) or six (6) 9-watt maximum compact fluorescent light bulbs (not included) or six (6) 4.5-watt maximum SBLED light bulbs (not included) into fixture. **DO NOT EXCEED SPECIFIED WATTAGE OF PENDANT.**

CARE INSTRUCTIONS:

Wipe with a soft, dry cloth. To protect finish, avoid the use of chemicals and household cleaners.