

# ASSEMBLY INSTRUCTIONS

## ITEM DESCRIPTION:

ITEM NO.: FAI21

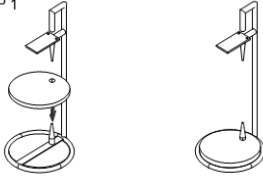
NAME: IVETTA DRINK TABLE

MATERIAL TYPE: Marble

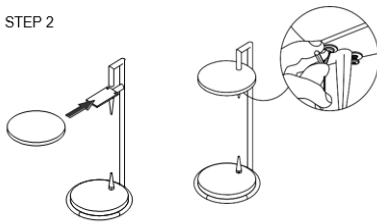
FINISH: Toronto

ITEM NET WEIGHT: 25.6 Lbs

STEP 1



STEP 2



## PARTS INCLUDED:

Marble Top Qty: 2 Pcs

Iron Base Qty: 1 Pc

Allen Bolt Qty: 2 Pcs

Washer Qty: 2 Pcs

Allen Key Qty: 1 Pc

Note: Make sure the shelves are aligned properly before tightening.



## TO ASSEMBLE:

Please open the Box and unpack all on the soft flat surface, dont throw any material before complete the installation.

1) Position the bottom marble shelf onto the hook, sliding it down until it is securely in place, as shown in Step 1

2) Place the top marble shelf onto the small iron plate.

3) Hold it steady and see the underneath of the top. You can see the holes to tighten bolts.

4) Tighten the bolts using the Allen key provided, as shown in Step 2.

6. Tighten the screws completely to finish the assembly.

## CARE INSTRUCTIONS:

Wipe with a soft, dry cloth. To protect finish, avoid the use of chemicals and household cleaners.

For customer service questions call 1-800-338-2150

ARTERIO RS