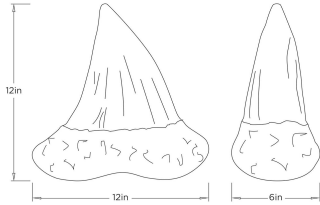


ARTERIOS

MIYATAKE SCULPTURE



AS117 MIYATAKE SCULPTURE

ARTERIOS



AS117

Antique Brass, Aluminum

This oversized nod to a shark's tooth adds adventurous intrigue to a shelf, credenza, or cocktail table. Cast of antique brass aluminum with a hollow center, it can be displayed standing up or on its side for different effects. Felt dots cushion the base.

APPEARANCE

Materials	Aluminum
Finishes	Antique Brass
Finish Will Vary	No
Top Coat/Sealant	No

DIMENSIONS

Overall	W: 12 in x D: 6 in x H: 12 in
Foot Print	W: 8.5 in x D: 4 in
Opening	W: 7.5 in x D: 3.5 in

SHIPPING

Product Weight	8.0 lbs
Gross Weight 1	9.0 lbs
Shipping Box 1	W: 15.0 in x D: 9.44 in x H: 15.0 in

CONTRACT

Contract Suitability	Contract Suitable As Is
----------------------	-------------------------